

NéonLux 1614



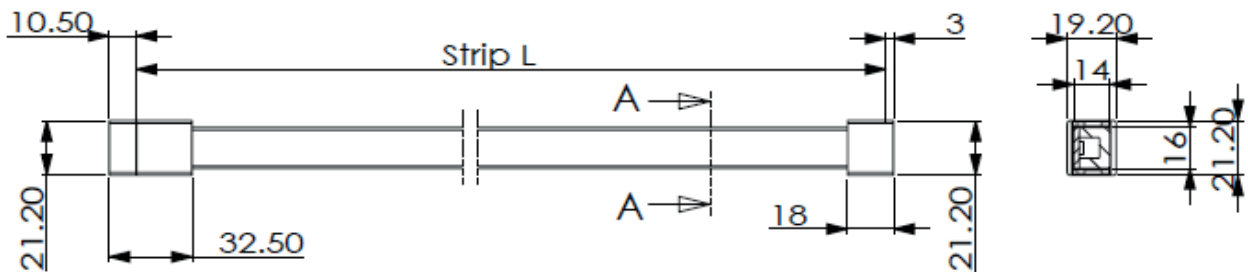
1. Features

- ✦ Top bending and top lighting product
- ✦ Lumileds 2835 LED inside
- ✦ Dual-extrusion, diffused silicone lens and thermal conductive base
- ✦ UV and yellowish resistant
- ✦ IP67 and salt-mist proof
- ✦ L70B50 > 50,000hrs
- ✦ UL 94 V-0
- ✦ Easy installation and re-connect accessories
- ✦ Min. bending radius 10 cm

2. Applications

- ✦ Neon tube light source
- ✦ Freezer and cooler lighting
- ✦ Building and sign outline lighting
- ✦ General and cove lighting
- ✦ Ships, boats and trucks outline lighting
- ✦ Bathroom, spa room lighting

3. Dimensions



Notes:

1. Unit: mm
2. Strip L = 10meters for 24V products in standard configuration

4. Environmental and Application Conditions

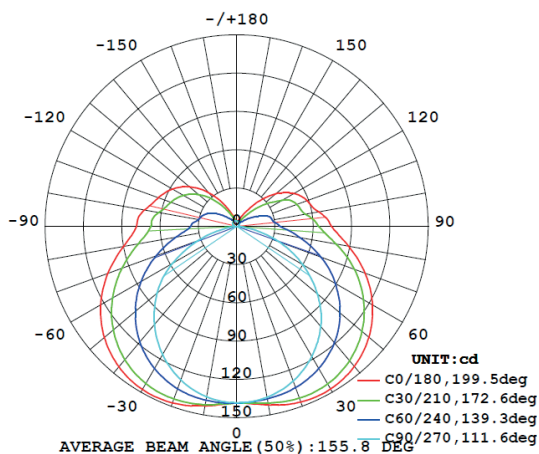
Ambient temperature range (TA on free air)	-40°C ~..+55°C
Operating (case) temperature range (TC)	-40°C ~..+65°C
Storage temperature range	-40°C ~..+85°C
IP rating	IP67

5. Electrical parameters

Item	GL-NF1614-24V
Supply voltage range	24.0 ± 1.0 VDC
Supply Current range (per meter)	Typ.500mA
Power range (per meter)	Typ. 12W
ESD protection	Contact 4KV, Air 8KV
Max. length for single end power-in	10 meters
Max. length for two ends power-in	15 meters
Cutting unit length	100mm for W/R/G/B/Y products 71.5mm for RGB products

6. Optical parameters

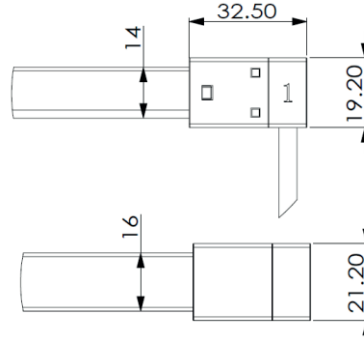
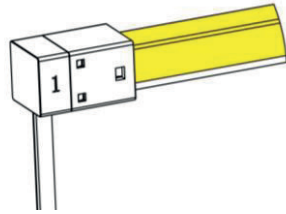
Part No.	Colorimetric Parameters				Product Flux	LED Type
	Color	Value	CRI	CCT Range	Typ. Lm/mtr	
GL-NF1614-24V	White	6500K	Ra.80	6150~6850K	1000lm	Lumileds 2835
	White	5000K	Ra.80	4750~5250K	1000lm	Lumileds 2835
	White	4000K	Ra.80	3830~4170K	1000lm	Lumileds 2835
	White	3000K	Ra.80	2850~3150K	950lm	Lumileds 2835
	White	2700K	Ra.80	2600~2800K	950lm	Lumileds 2835
	Red	622.5nm	N.A	N.A	270lm	N.A
	Green	525nm	N.A	N.A	460lm	N.A
	Blue	467.5nm	N.A	N.A	165lm	N.A
	Yellow	590nm	N.A	N.A	240lm	N.A



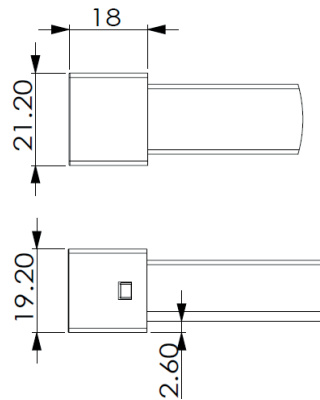
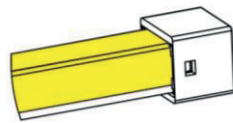
7. Connectors

Type 1, Soldering free power feed and end cap

*IP67 power feeder
Cable from bottom*

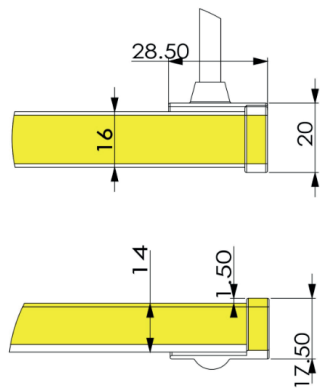
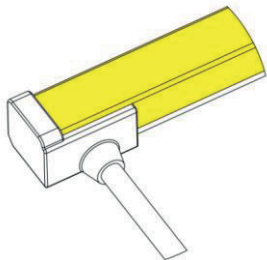


IP67 End cap

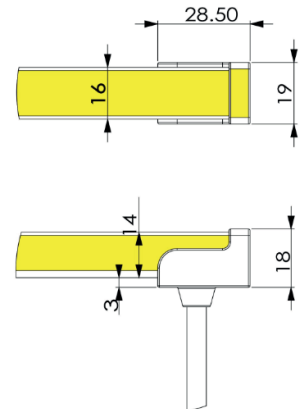
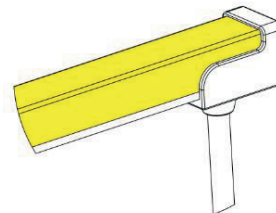


Type 2, IP67 power feed and end caps by molding

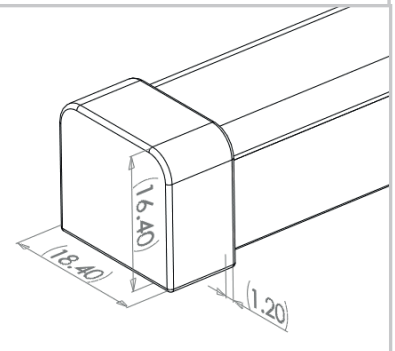
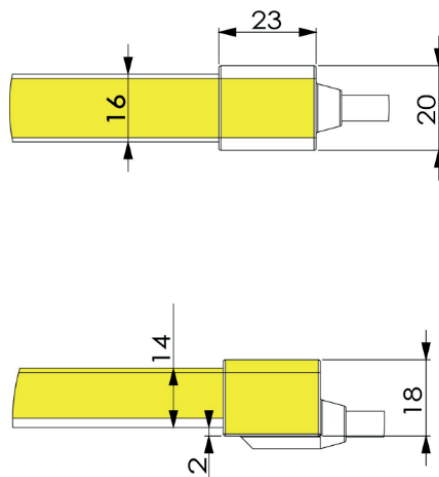
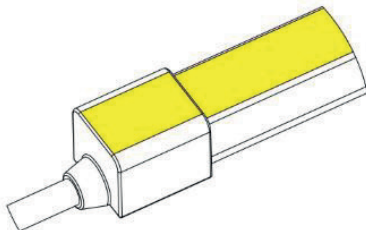
Side feeder



Bottom feeder

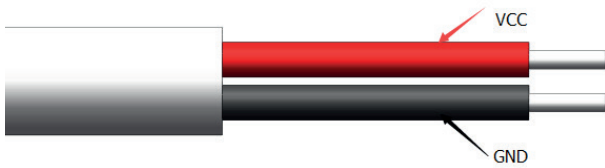


End feeder



End Cap

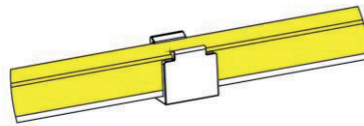
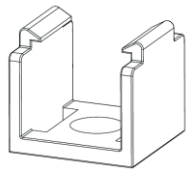
8. Wiring



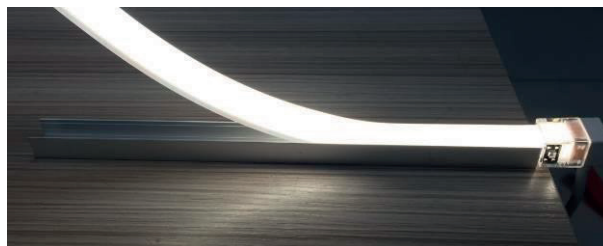
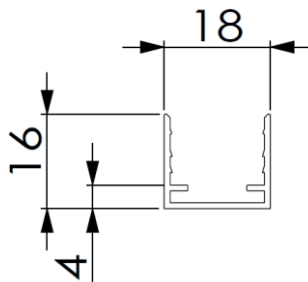
Single color product

9. Installation accessories

Type 1, transparent PC clips for indoor application

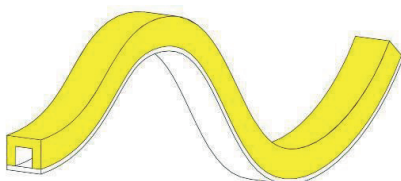


Type2, AL profile for outdoor application (1meter per pcs, can be cut to any length needed)



10. Attention

- a. The LED neon itself and all its components may not be mechanical stressed.
- b. Please ensure that the power supply is adequate power to operate the total load. Only qualified personnel should be allowed to perform installations.
- c. The design of the housing should be according to the IP standards in the application.
- d. If surge protection structure not within power supplier, a lightning protector should be needed additionally.
- e. Before cutting and making reconnection, please read the user manual, and please ensure you have read and fully understand it.
- f. Please do not twist the product and do not bend it in wrong direction, the only bending direction as following:



11. Package

1. 10 meters LED neon and 1 set of additional connectors and clips in one inner box
2. 6 inner boxes in one carton (57.5x49.5x26.5cm, 20kg)

