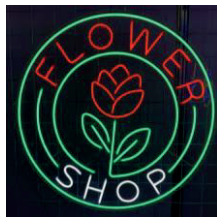
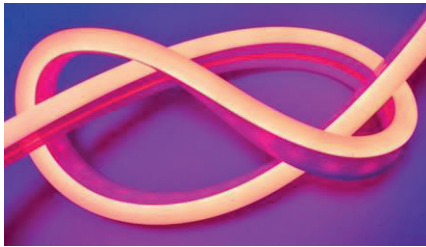


NéonFlex 6mm



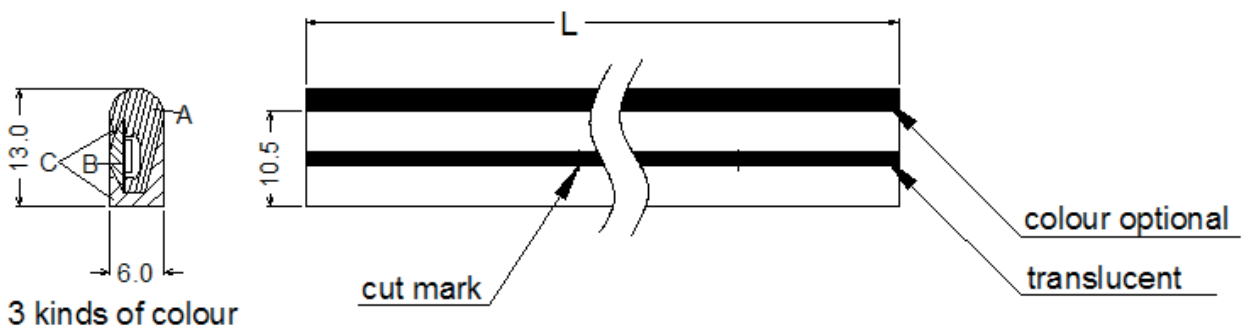
1. Features

- ✦ Side bending and Top lighting
- ✦ Enhanced SMT LED inside
- ✦ 3-color silicone extrusion
- ✦ UV and yellowish resistant
- ✦ IP65 and salt-mist proof
- ✦ L70B50 >25,000hrs
- ✦ Easy installation and re-connect accessories
- ✦ Bending angle: nearly 360°

2. Applications

- ✦ Neon tube light source
- ✦ General and cove lighting

3. Dimensions



3 kinds of colour

Notes:

1. Unit: mm
2. Strip L = 5 meters in standard configuration, max 50m per roll.

4. Environmental and Application Conditions

Ambient temperature range (TA on free air)	-40°C ~..+55°C
Operating (case) temperature range (TC)	-40°C ~..+65°C
Storage temperature range	-40°C ~..+85°C
IP rating	IP65

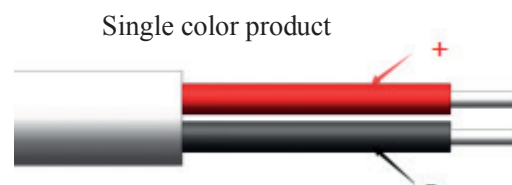
5. Electrical parameters

Item	GL-NF0612-12V-XXX
Supply voltage rated	12.0 VDC
Supply Current rated (per meter)	750 mA
Power rated (per meter)	9 W
Max. length for single end power-in	5 meters
Max. length for two ends power-in	10 meters
Cutting unit length	25mm

6. Optical parameters

Part No.	Colorimetric Parameters		Product Flux	CRI
	Color	Value	Typ. Lumen	
GL-NF0612-12V-W100	White	10000K	320 lm/m	
GL-NF0612-12V-W30	White	3000K	320 lm/m	
GL-NF0612-12V-R	Red	620-630nm	TBD	N.A
GL-NF0612-12V-G	Green	520-530nm	TBD	N.A
GL-NF0612-12V-B	Blue	460-470nm	TBD	N.A
GL-NF0612-12V-P	Pink	380-440nm	TBD	N.A
GL-NF0612-12V-GY	Golden yellow	600-605nm	TBD	N.A
GL-NF0612-12V-LY	Lemon yellow	570-580nm	TBD	N.A
GL-NF0612-12V-CY	cyan	480-485nm	TBD	N.A

7. Wiring



8. Attention

- The LED neon itself and all its components may not be mechanical stressed.
- Please ensure that the power supply is adequate power to operate the total load. Only qualified personnel should be allowed to perform installations.
- The design of the housing should be according to the IP standards in the application. Recommend using indoor.

- d. If surge protection structure not within power supplier, a lightening protector should be needed additionally.
- e. Before cutting and making reconnection, please read the user manual, and please ensure you have read and fully understood it.